

# City of Belleville Sanitation Department

512 W. Main St.  
Belleville, IL 62220  
618-233-6816



## General Collection Information

Containers shall be in good repair with handles and lids. Placement of containers shall not be more than 5 feet from the street property line and must be placed out for collection before 6 a.m. Cans must be removed from the curb within 24 hours after collection. No concrete, bricks, shingles, hazardous or flammable materials will be accepted. During the months of May, June, July, August and September, containers must be placed out by 6 a.m. the day of pickup. **NO EXCEPTIONS.** Cans may be placed at the curb the night before pickup.

## Automated Trash Collection

This service uses 96-gallon trash totes. The first tote is provided by the City of Belleville. The original tote must remain with the property. All additional totes are \$75 and can be paid for at the Sanitation Office. All trash must be bagged and fit inside the tote with the lid closed. Do not stack trash bags on top of tote. No bags outside the tote will be collected. Yard waste and building materials are not accepted inside totes. Please set out totes with the lid facing the street and the wheels facing the house. Please ensure cans are 5 feet or more **AWAY** from utility poles, vehicles, mailboxes, etc.

## Manual Trash Collection

This service uses trash cans up to 45 gallons, but drivers prefer 32-gallon cans. All cans must have handles, no wheels, and a detachable lid. The cans should weigh no more than 60 pounds when filled. All trash should be bagged, tied, and placed inside the can; no loose trash will be collected.



## Yard Waste Schedule

Yard Waste is collected in two-ply Kraft **paper bags** or in a 32-gallon container clearly marked yard waste. Plastic bags are not accepted. Yard waste will be picked up during the 2nd full week of January & February during the winter. Weekly pickup of yard waste will run the first full week of March through the 2nd Friday of December.

*\*Yard waste collection is weather permitting. Please use judgement if wet weather is forecasted and you're using biodegradable bags.*

## YARD WASTE COLLECTION DATES

*Weather Permitting*

January 2023: January 9-13  
*(2nd full week, only)*

February 2023: February 13-17  
*(2nd full week, only)*

Weekly collection begins the 1st full week of March through the 2nd full week of December, specifically, **March 6–December 15, 2023**  
*(A full week = Monday-Friday)*

After December 15, 2023, there will be no Yard Waste collection until the 2<sup>nd</sup> full week of January 2024.

## Trash Schedule

*The Sanitation Department does not operate on the following holidays:*

New Year's Day  
Memorial Day  
4<sup>th</sup> of July  
Labor Day  
Veterans Day  
Thanksgiving Day  
Christmas Day

**IF YOUR PICK-UP DAY FALLS ON OR AFTER A HOLIDAY, YOUR PICKUP FOR THAT WEEK WILL BE DELAYED BY ONE (1) DAY.**

## For Billing Inquires:

Contact the Sewer & Sanitation  
Billing Department at  
618-233-6518, x1246

## Single Stream Recycling

The city offers curbside recycling for ALL residents with trash service with the City of Belleville. Those residents with existing recycling containers can place all recyclables co-mingled into an existing container or place all recyclables in a 32-gallon size trash can, without wheels, and properly labeled Recycling. Please, place recyclables ONLY in this container. No sorting is necessary. Please ensure containers are cleaned out thoroughly. Recyclables are collected weekly on your regular trash collection day.

### The city accepts the following recyclables:

- Plastics** (no Styrofoam, plastic bags, or plastic utensils)
- Glass** (jars and bottles only)
- Paper** (newspaper, office paper, envelopes, folders, spiral notebooks)
- Cardboard & Paper Board if broken down** (no wax covered cardboard)
- Aluminum & Tin**



## Large Item Pick-Up

The city offers a large item pick up on a daily basis, by reservation, for a minimum fee of \$65 for one load, \$90 for two loads, and \$120 for 3 loads. To arrange for a pickup, call the Sanitation Department at 618-233-6816 between the hours of 8 a.m. and 4:30 p.m., Monday through Friday. All building materials must be cut and bundled in 4-foot lengths or less with twine, string, or rope.

*The following items will not be picked up for a large item pick up: concrete, bricks, shingles, tires, appliances, electronics, paint or other hazardous wastes, batteries, yard waste, or Waste Management bags filled with items.*

## Commercial Refuse

The city offers light commercial services with a four toter maximum. The first toter is provided. Additional toters cost \$75 each. Dumpster service must be contracted to an independent hauler. Contact the Sanitation office for further assistance.



Please place all cans and totes as pictured above, so the Sanitation Department can properly collect your refuse.

For the most up-to-date information about the  
City's Sanitation Department,  
visit [www.belleville.net/358/Sanitation](http://www.belleville.net/358/Sanitation)  
or call 618-233-6816.

# City of Belleville Sanitation Department

512 W. Main St.  
Belleville, IL 62220  
618-233-6816



## SINGLE STREAM RECYCLING

### MATERIALS ACCEPTED



Office Paper, Newspaper, Envelopes,  
Folders & Spiral Notebooks



Paper Back Books  
(no hard cover books)



Magazines, Catalogs &  
Telephone Books



Cardboard  
(no waxed cardboard)



Newspaper, including inserts  
(remove plastic sleeves)



Kraft (brown paper) Bags



Carrier Stock  
(soda & beer can carrying cases)



Milk and Juice Jugs



Food Containers



PVC Narrow Neck Containers  
(#3 Plastic Resin), such as health &  
beauty aid products, household cleaners



Aluminum Cans, Trays  
& Foil



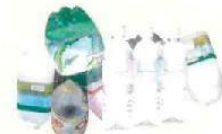
Steel Cans and Tins



Plastic Buckets



Gable Top Containers  
(milk and juice cartons)



PET Soda, Water & Flavored  
Beverage Bottles  
(#1 plastic resin)

### NO Styrofoam NO Food Contaminated Materials

Notes: 1. No motor oil, insecticide, herbicide or hazardous chemical containers. 2. All containers must be emptied.  
3. No expanded foam containers, restroom papers or papers that contain synthetic materials.



Simply Recycle.

[www.qrsrecycling.com](http://www.qrsrecycling.com)