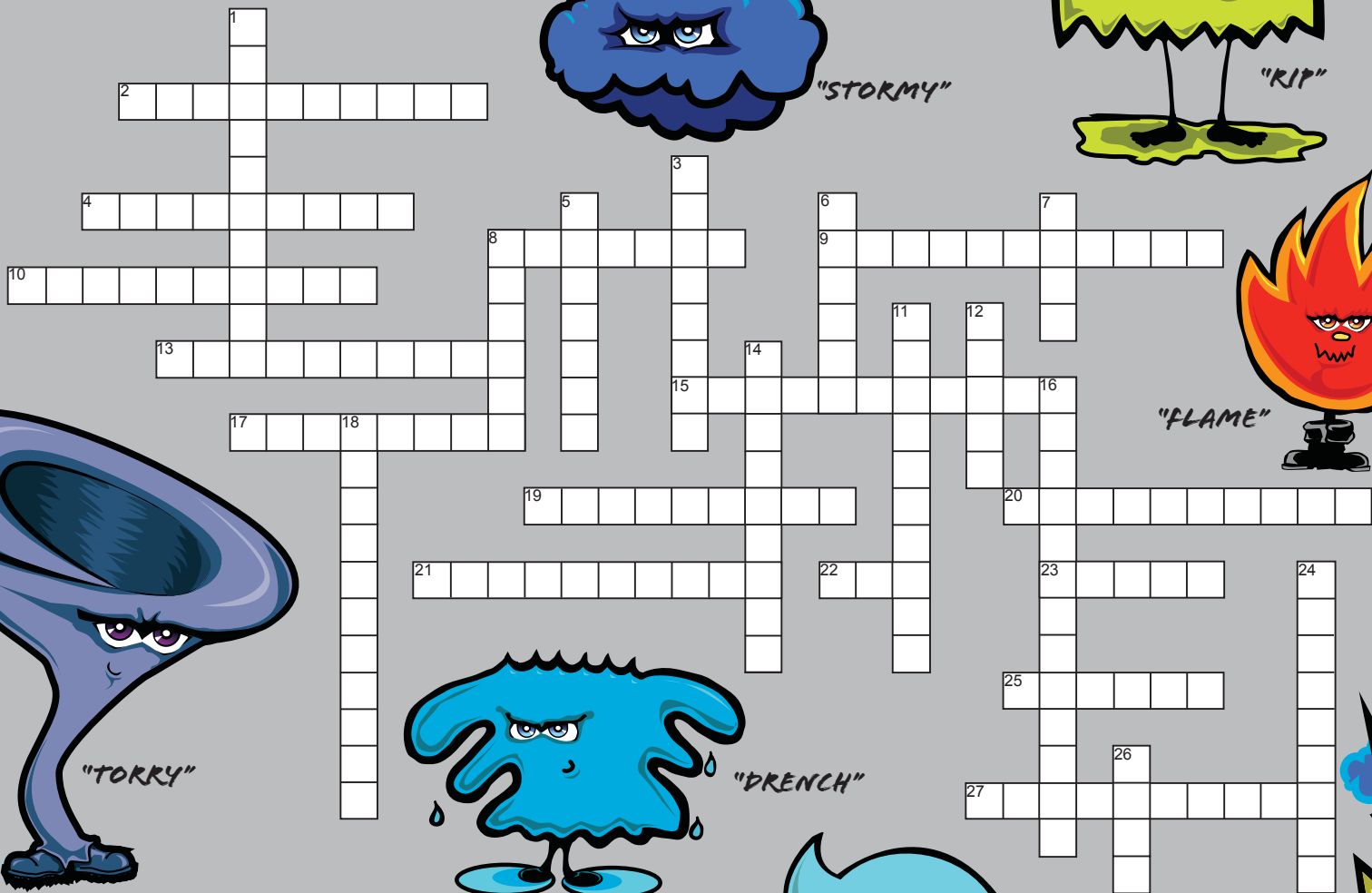
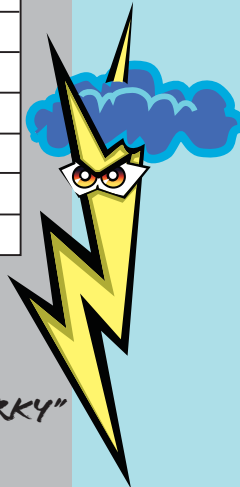
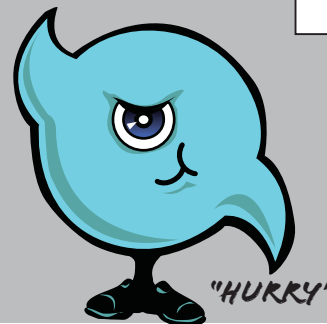
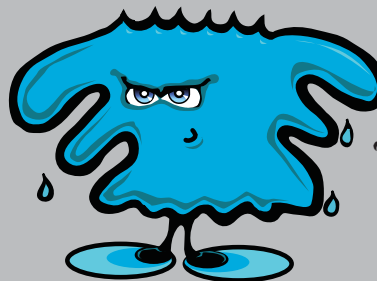
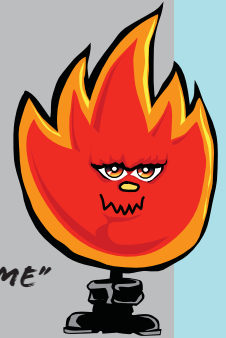
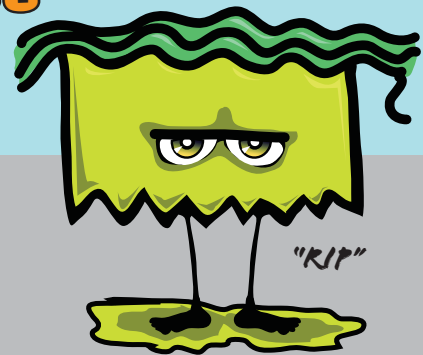


# HAZARDOUS WEATHER AWARENESS CROSSWORD PUZZLE

Look through the Hurricane Herald to find the answers to the puzzle.

Sunshine State Standards: LA.A.1.3; LA.A.2.3



## ACROSS

2. This is a large dome of water that sweeps across the coastline near where a hurricane makes landfall.
4. When heavy rain occurs, the ground becomes \_\_\_\_\_, which means it can no longer hold any more water.
8. Any large body of water is capable of producing this.
9. This type of radiation is one form of energy that comes naturally from the sun.
10. When a weather forecaster says the air is moist, he or she means the air contains a lot of this.
13. Many people die from \_\_\_\_\_ flooding because they try to drive through water that covers roads.
15. In Florida, this group is more frequently struck by lightning than any other group.
17. Dangerous tornadoes can occur in this winter month.
19. Afternoon summertime outdoor activities are all dangerous when this occurs.
20. Thunderstorms are nature's way of balancing differences in this.
21. This type of fire reduces the hazardous accumulations of brush to lower the risk of loss to homes, businesses, recreation areas and forests when wildfires occur.
22. This organization (abbreviation) issues daily UV Index Forecasts.
23. A tornado is a violently rotating \_\_\_\_\_.
25. This type of water is very powerful.
27. Install and routinely check battery-operated carbon monoxide and smoke detectors with alarms wherever these are used.

## DOWN

1. The word tsunami means this.
3. This is a measure of the amount of moisture in the air.
5. The most common form of skin damage is this.
6. Tornadoes are classified according to the damage that they cause on this scale.
7. These fires can cause major environmental, social and economic damages.
8. Most thunderstorms last approximately this many minutes.
11. During a hurricane, the threat from water can come from two directions.
12. The National Weather Service has a saying, "Turn Around ... Don't \_\_\_\_\_."
14. The combination of heat and humidity is called this.
16. In 1886, an earthquake in this state causes a tsunami in Florida.
18. These can move at speeds of eight feet per second, and it's hopeless to try and swim directly against them.
24. These are brief bursts of wind that can be considerably stronger than sustained winds.
26. This is the key to reduce the number of human-caused fires.

